





**EF680E-B**  
U/Price: 3000.00

**EF680E-W**  
U/Price: 3000.00



High security RFID card



Touch pad design



Privacy mode



Secure and power save European lockcase



Key override and 9V battery terminal for emergency use

MODEL	EF680
<b>Hardware</b>	
Material	Zinc Alloy
Finishing and Color Options	Black with Silver Rim, White with Silver Rim
Keypad	Illuminated 12 keys
Mortise Type	X15 (European Norm Mortise with Automatic Deadbolt)
<b>Storage</b>	
Card Key	100
PIN Code	10
Remote Control (Optional)	8
<b>Enrollment &amp; Verification</b>	
Methods	Card Key, PIN Code, Mechanical Key Override and Remote Control
Verification Time(sec)	<1 s
Length of password	8 digits
Voice Prompt	Voice Guidance
<b>Alarm System</b>	
Low Battery Alarm	Yes
Break-in and Tamper Alarm	Yes
Wrong PIN Code Lockout Alarm	Yes
Passage Mode	Yes
Backup Unlock Mechanism	External emergency battery or Mechanical Keys
Backset	55 mm or 70 mm
Door Thickness(mm) Applicable	35-60 mm (Standard); 60-100 mm (optional)
RFID	ISO 14443 A Type, 13.56 MHZ
Dimension(mm)	External Body: 285*74*26.9 Internal Body: 285*74*27.9

# ELECTRONIC DOOR LOCK



EF780E-B

U/Price: 3900.00

EF780E-W

U/Price: 3900.00



Reliable & Fast fingerprint sensor



Touch pad design



Privacy mode



Secure and power save European lockcase



Key override and 9V battery terminal for emergency use

MODEL	EF780
Hardware	
Material	Zinc Alloy
Finishing and Color Options	Black with Chrome Rim, White with Chrome Rim
Keypad	Illuminated 12 keys
Mortise Type	X15 (European Mortise with Automatic Deadbolt)
Storage	
Fingerprint	100
PIN Code	10
Remote Control (Optional)	8
Enrollment & Verification	
Methods	Fingerprint, PIN Code, Mechanical Key Override and Remote Control
Verification Time(sec)	<1s
Length of password	8 digits
Voice Prompt	Voice Guidance
Alarm System	
Low Battery Alarm	Yes
Break-in and Tamper Alarm	Yes
Wrong PIN Code Lockout Alarm	Yes
Passage Mode	Yes
Backup Unlock Mechanism	External emergency battery or Mechanical Keys
Backset	55 mm or 70 mm
Door Thickness(mm) Applicable	35-60 mm (Standard); 60-100 mm (optional)
Dimension(mm)	External Body: 285*74*26.9



**EF180-B**

**U/Price: 1700.00**



**EF280-W**

**U/Price: 2300.00**

MODEL	
Features of EF180 / EF280	Specifications
Digital touch pad design	Media Type (for EF180) : RFID Card, 13.56 MHz, Mifare ISOdigits14443A
EF180-RFID Card (Up to 50cards)	
EF280 - Fingerprint (Up to 50 Fingerprints) with easy & reliable touch fingerprint sensor	Fingerprint (for EF280) : Touch Capacitive type sensor
Password identification	User Password : 4 - 12 digits combination
Easy registration of password and fingerprint (EF280) / proximity card (EF180)	User capacity : Up to 50 cards (EF180) or up to 50 fingerprints (EF280)
Factory reset	Color : Black & White
Master code	
Enhanced security by scramble code	Applicable Door : 32 - 65mm
Standard of double security access mode	
Free access or privacy mode selectable	Material : Zinc die casting
Break-in and damage alarm	
Wrong-try lock-out delay	Power : 4 x AA size 1.5V Alkaline batteries
3 min lock mode	Battery Lifetime : Approx. 1 year with 10 access per day
Voice guide with volume control	
External 9V battery terminal for emergency use	Dimension : External Body : 23 (D) x 167 (W) x 65 (H) Internal Body : 29 (D) x 154 (W) x 77 (H)
Low battery power alert	

# ELECTRONIC DOOR LOCK

# KABA®



E30-EN-SILVER

U/Price: 1800.00

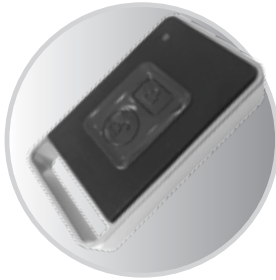


MODEL	E30-EN
<b>Hardware</b>	
Material	Zinc Alloy
Finishing and Color Options	Silver, Gold
Technology	RFID Card
Mortise Type	European Mortise with Automatic Deadbolt (E30-EN)
<b>Storage</b>	
Card Key	64
Mechanical Key Override	3
<b>Enrollment &amp; Verification</b>	
Methods	Card Key, Mechanical Key Override
Verification Time(sec)	<1s
<b>Operation Environment</b>	
Temperature(°C)	-10~55
Humidity(%)	10~90
Power Input	4 X 1.5V AA Alkaline battery
Voice Prompt	Beep
<b>Alarm System</b>	
Low Battery Alarm	Yes
Break-in and Tamper Alarm	Yes
Passage Mode	Yes
Backup Unlock Mechanism	External emergency battery or Mechanical Keys
Backset	55 mm or 70 mm (E30-EN)
Door Thickness(mm) Applicable	35-80 mm (Optional)
RFID	ISO 14443 A Type, 13.56 MHz
Dimension(mm)	External Body: 173.5*151.3*79 Internal Body: 172*150*76.3



**RFID Mobile Tags**

U/Price: 41.00



**Remote Control - Hybrid**

U/Price: 240.00



**RFID Card**

U/Price: 36.00

Single Cylinder with 3 key (for EF680 / EF780)	EFDL0071	RM318.00
Mortise (EN) - 55mm	EFDL0038	RM570.00
Mortise (EN) - 70mm	EFDL0068	RM570.00
Rebated Kit for E Flash Mortise Lock	REKI0015	RM87.00
Striker Plate and Screw for 61 - 80mm Doors		RM45.00
Striker Plate and Screw for 61 - 100mm Doors		RM45.00
S/S Extended Forend Plate	KBFP-275	RM48.00

## MERCHANDISE STAND

