



# Safe Lock range

The quality of  
product, the  
strength of keys,  
the pedigree of  
technology

dormakaba 

# dormakaba Safe Locks Safe and Secure



## **dormakaba – Safe and Secure**

The quality of product, the strength of keys, the pedigree of technology, combined with reliability and availability, ensures dormakaba safe locks are suitable for the protection of cash in ATMs, safes and filing cabinets whether in the retail sector or financial institutions. Protection from intent within is as critical as defence against outside aggression.

dormakaba's mission is an ongoing quest for excellence, focused on customer benefit, backed by quality products. This makes dormakaba a winning combination.

**Dorma and Kaba are now dormakaba. Our merger underscores our commitment to you, our customer. We offer products, solutions and services for secure access to buildings and rooms – now all from a single source. With more than 150 years of experience, we stand for security, sustainability and reliability.**

## **dormakaba have an extensive mechanical and electronic safe lock range**

The Mauer range of mechanical locks and the Mas self powered Cencon and Auditcon safe locks provide unrivalled features and benefits for end users. The Axessor series which includes Axessor USB, Axessor IP and Axessor CIT provides a solution for every application. They include features such as programming via the LAN, One time combination or ICS mode, Time delays, extensive audits and unparalleled reliability. Ultimate security is offered through the Paxos safe lock which is renowned as the world's most reliable electronic safe lock.

The La Gard brand products range from mechanical to electronic safe locks delivering unmatched quality and value, including combination & key locks, and electronic multiple control locks for use on safes with coffers/internal cabinets. The total flexibility of the dormakaba range of secure solution safe locks is suitable for many applications including commercial and retail markets.

# Cencon O2

## ATM Cash Vault Security System



### Features

- One Time Combination  
A OTC is dispatched from the Cencon software, the user's Dallas key and OTC are required to gain access to the Cencon lock
- Audit trail
  - 1000 audit from lock
  - Unlimited audit from software
  - 32 event audit from Dallas key
- Smart key (Dallas)
  - Unique electronic key for each user
- Duress
- Bolt switch
- Alarm shunt
- Easy retrofit
- standard footprint
- User friendly Cencon 5 software

### Approvals/Certificates

- EN1300 B/ VdS Class 2

**The Cencon system has been designed to combat insider theft from ATMs through the combined use of lock hardware, systems software and Smart Keys™.**

### Three modes of operations:

#### • FLM mode – KEY & OTC

For use by First Line Maintenance personnel, they are each issued with a Blue dallas key and call their despatch centre to request an OTC. Once the OTC is used it can not be reused. A close seal is relayed back to the despatch centre to close the call on the software and lock.

#### • Route mode – KEY & OTC

For use by armoured cash carriers, each personnel is issued with a Yellow dallas key, operates the same as FLM mode (above). Route mode additionally allows predefined routes to be assigned to personnel allowing a series of locks to be opened without contacting the remote despatch centre between each opening.

#### • Bank mode – KEY and Fixed code

For use by Bank personnel, who require access to the lock, without operating through a despatch centre. Teal dallas keys and combination codes are issued to personnel allowing access within the personnel's work schedule.

### Connecting Securely from Anywhere

Traditionally, the CenTran software has given users the ability to automate various Cencon features, such as code generation and distribution through third- party dispatching software. With the use of a third party IVR system or CenTran Appliance, CenTran v5.1, with its Windows® Service feature, enables remote operations. CenTran's Web Service lets field personnel receive their One Time Combination via text or email, eliminating time-sensitive contact with dispatch personnel. The new Interconnect Box for network/line power connection to the ATM PC, used in conjunction with CenTran Web Service and ATM-side CenTran Agent software, allows users to remotely activate, audit, shelve, and manage Cencon Locks. By installing the new Key Box Agent software, you can manage keys and users remotely too!

Settings	FLM	Route	Bank
Powerstar Technology	✓	✓	✓
One Time Combination (OTC)	✓	✓	
Dual Mode	✓	✓	✓
Close Seal	✓	✓	
On site software management			✓
Time Delay			✓
Time Windows	✓	✓	✓
Audit Trail			
Lock	1000	1000	1000
Dallas key	32	32	32
Software	Unlimited	Unlimited	Unlimited

# Axessor IP

## Modular, Flexible, Networked



### Axessor Features

- Patented motor lock with automatic locking
- Deadbolt
- Standard footprint
- High quality, rugged metal input unit with elegant design
- LCD display
- Long battery life
- External power supply (12 V or 6 V)
- Remotely accessed reducing administration and travel cost
- Programmable Time lock functions weekly and yearly periods
- Audit Trail 10,000 events
- Standalone or networked
- Data encryption (AES-256)
- Dual mode

### Software

- AS 280 installation software:
- AS 283 SDK: – Software development package
- AS 284 programming software and LAN/WAN software

### Approvals/Certificates

- ECB-S, EN 1300 level B, VdS Class 2, VdS strike plate contact for IDS class C, CNPP a2p level B, UL Type 1
- Spy Shield available

**The modular electronic safe lock Axessor IP can be networked or used as a stand-alone unit.**

**It can be used wherever organisational flexibility, fast response and increased security are required.**

The Axessor is the ideal safe lock for organisations with large branch networks, such as banks, post office, retail and restaurant chains. All programming/audit functions can be changed remotely via the LAN/WAN.



The optional Ebox gives the flexibility for the Axessor system to be programmed over a company's network. Also incorporating additional inputs and outputs.

Axessor IP	
Network capable	Yes
Master code	1, Can / cannot open lock. Optional Time lock interruption
Manager codes	4, authorisations can be selected
User codes	36, four groups
Courier codes	1, open or time delay override
Special codes	Interior compartment code, time code, one shot code, locking and unlocking code, lock disabling / enabling
Dual Mode	Yes, any two codes, same or different user groups
Weekly locking periods	35
Holiday locking periods	22
Time lock interruption	Yes, 8 programmable
Time delays	8, two per group
Time-dependent functions	3 for group 1, 2 and 3
Non-return time delay	Yes
Selectable display for time delay counting	Yes
Local connection	USB
Event memory	10,000 entries
Languages	EN, NL, FR, GE, HU, IT, PO, PT, SP



# Axessor CIT

## The Interactive Code System



### Additional functions

- Input Unit:
  - Metal housing in black
  - Silicon key pad, green navigation keys
  - Integrated battery compartment
- Motor bolt, 5 N moving force in both directions
  - Dead bolt or spring bolt (non-VdS) setting
  - Bolt with 2 M4 threads
  - Lock mounting set, incl. 3 M6 screws

### Axessor CIT Features

- Motorised lock with automatic locking
- Fast retrofitting, standard footprint
- High quality, rugged metal input unit with elegant design
- LCD display and buzzer
- Long battery life
- Battery compartment accessible externally
- Time lock functions: weekly locking programme, holiday periods, yearly repeating periods
- Audit Trail
- ICS verifies whether an authorised person really is on-site, in front of the lock +OTC
- No additional media required for identification
- Duress code and remote disabling
- Parallel mode OTC and standalone

### The One Time Combination (OTC) lock Axessor CIT is characterised by its Interactive Code System (ICS).

The Axessor CIT lock works in OTC mode or ICS. ICS mode ensures an authorised person is on site in front of the lock before access is permitted to the lock, thus ensuring total security and peace of mind. Personnel obtain a validation code from the lock by entering their own unique personal code. This is relayed to a second party in a dispatch centre or via an automated despatch system and an OTC or ICS code is issued. The Axessor CIT can also work in standalone mode alongside OTC/ICS.

The AS284 software allows LAN communication as well as programming the lock for time delays and holidays in standalone mode.

### Functions:

- Codes
  - 1 Master
  - 4 Managers
  - 36 Users
  - 1 Courier
- Code Functions
  - OTC with close code, incl. battery status and lock/ door activity feedback
  - Wrong try lockout after 4 false codes
  - Duress code (silent alarm)
  - Single mode
  - Dual mode
  - Shelf function
- Time Lock
  - Time delay
  - Duress time delay
  - Opening window
  - Non-return time delay
  - Automatic DLST (summer/ winter time) changeover
- Audit
- 10,000 events
- Power Supply
  - 3 x 1.5 volt Alkaline batteries LR6/AA (included in delivery)
  - 3 x Inputs and outputs

### Approvals/Certificates

- EN 1300 B, ECB- S, VdS class 2, CNPP a2p level B, UL Type 1
- Spy Shield available





# Axessor USB



## Axessor USB Features

- Motorised lock with automatic locking
- Dead bolt/ spring bolt
- Standard footprint
- High-quality, rugged metal input unit with elegant design
- Display panel
- Long battery life or 6v mains power
- Time lock functions: weekly, locking programme, holiday periods, yearly repeating periods
- Code denial
- Duress code
- Inputs/outputs integrated in lock unit e.g. alarm connection and bolt / door contacts
- Audit trail 10,000 events

## Software

- AS284 programming software

## Approvals/Certificates

- EN1300 B/ VdS Class 2
- Spy Shield available

## The "All-in-one" Motorised Combination Lock

The Axessor USB is designed particularly for applications in the moderate to high security sector. This particularly relates to the financial and retail industries. The standard footprint allows the lock to replace traditional mechanical safe locks and time locks. With diverse functionality and computer programmable inputs and outputs, each installation can be programmed to the customer specification. This unique flexibility, in combination with extremely easy installation and self-explanatory operation, means that the range of applications is virtually unlimited.



Axessor USB	
Network capable	No
Master code	1, Can / cannot open
Manager codes	2,
User codes	18, two groups
Courier codes	1, time delay override
Special codes	No
Dual Mode	Yes, any two codes
Weekly locking periods	16
Holiday locking periods	22
Time lock interruption	No
Duress Time Delay	2
Non-return time delay	No
Local connection	USB
Event memory	10,000 entries
Languages	EN, NL, FR, GE, HU, IT, PO, PT, SP



# Auditcon®



## Approvals/Certificates

- EN1300 B/ VdS Class 2
- Spy Shield available



Round



Vertical

## A true stand-alone safe lock designed for retail, commercial and industrial applications.

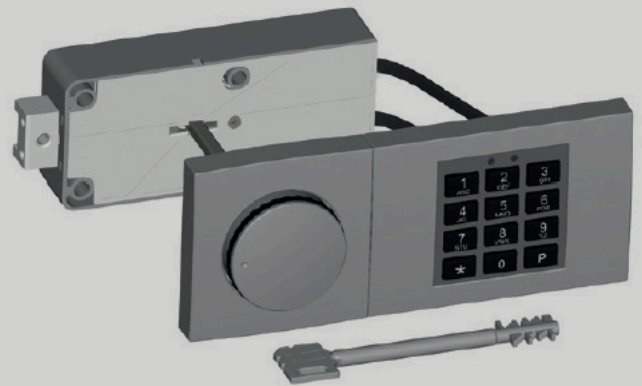
The Auditcon utilises the award winning Powerstar™ technology (no batteries required). The new Auditcon 2 lock series features faster power up, improved serviceability, making securing valuables easier than ever before.

## Specifications

Features	552	252	52 Series
Keypad Housing Style	Round/Vertical	Round/Vertical	Round/Vertical
Bolt Style	Dead Bolt/Slide Bolt	Dead Bolt/Slide Bolt	Dead Bolt/Slide Bolt
Access Users	99	20	2
Combination Length	8-digit combo	8-digit combo	6-digit combo
Uploadable Programming	Yes	Yes	No
Downloadable Audits	400	100	No
Power Source	Self-powered	Self-powered	Self-powered
Supermaster Reset	Yes	Yes	Yes
Manager Code	Yes	Yes	Yes
Wrong Try Lockout	Yes	Yes	Yes
Supervisor/Subordinate Mode	Yes	Yes	No
Single/Dual Custody Mode	Yes	Yes	Yes
Time Delay	1-99 min delay	1-99 min delay	1-99 min delay (T52)
	1-20 min opening	1-20 min opening	1-20 min opening (T52)
Time Delay Override	Yes	Yes	No
Time Delay Display	Optional	Optional	Optional
Time and Date	Yes	No	No
Timed Lockout	Yes	No	No
Window Lockout	Yes	No	No
Time Windows	Yes	No	No

# Combi B 30

## Proven reliability with new functions



### Codes

- 1 master
- 30 user codes
- 1 courier code

### Code functions

- dual mode
- time delay / open window
- code denial

### Alarm

- silent alarm
- bolt switch
- remote disabling

### Audit function

- 200 events, time and date stamped

### PC-software

- audit program
- customer programming files can be saved

### Power supply

- batteries in input unit
- additional battery compartment for an extended life time (option)
- external power supply unit (optional)
- external supply by alarm interface (optional)

### Design

- high quality
- elegant
- modern

### Flexibility

- can be integrated in access control systems
- All mounting positions
- Available optional accessories

### Certifications

- VdS cl. 2, EN 1300 B

**Introducing the new Code Combi B 30, new functions and ease of use means it meets most customer specifications. The CCB30 boasts a new modern metal input unit, completing the state of art appearance.**

The deadbolt lock comes with a double bitted key for mechanical redundancy, to ensure 100% operational use.

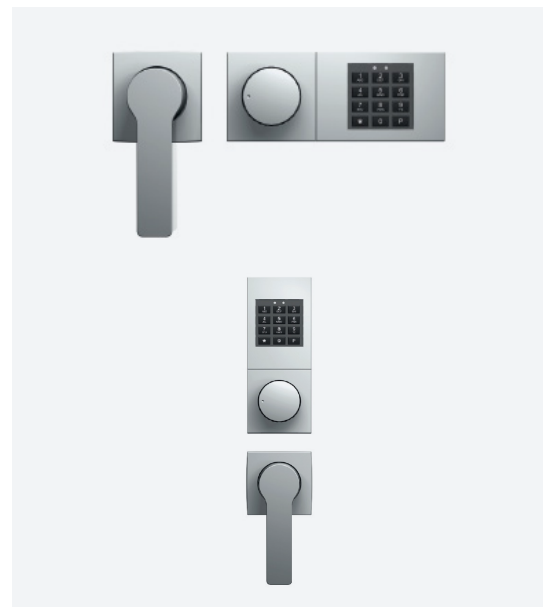
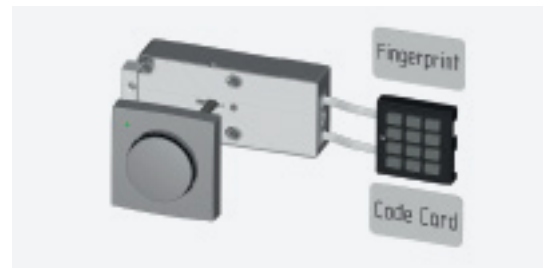
Power supply is either via AA batteries located in the input unit, or an optional power supply connection to the lock.

An optional handle is also available to complete the modern design input unit.

If the secure storage is operated by an existing access control unit, i.e. key reader, biometric reader the Code Combi B can be used with the knob set, which includes a status LED (Note this configuration is not VDS certified).

The Code Combi B 30 can be integrated into existing alarm systems with the optional alarm box.

The keypad and the knob of the input unit are designed to allow flexible mounting by the installer.



Horizontal and Vertical mounting directions



Mechanical override with simple key operation



# PowerPlex

## 2000 Series

**PowerPlex**  
2000 Series



### Typical Applications

- Small to medium-sized facilities
- Rarely visited remote locations
- Education Buildings
- Leisure centres
- Military facilities
- Retail
- Financial Sector

### Finishes



Satin brass



Satin chrome

### Environmentally friendly lock

The new integration of technology fits with today's security desires, enhances the user experience and is designed for a broad spectrum of applications. PowerPlex is similar to its mechanical lock counterpart, with the benefits of a full complement of electronic lock features and will retrofit mechanical E1000.

dormakaba sees the development of its PowerPlex and PowerStar technology as a sustainable innovation for a growing "green-minded" market. Self-powered security solutions address the needs and demands for the building hardware industry, and many retail and financial sectors. .

### Features

The feature-rich PowerPlex electronic push button lock provides access by entering a programmed PIN code, and allows free egress, eliminating concerns associated with issuing, controlling, and collecting keys or cards.

Based on the PowerStar Technology™, which has been used and manufactured for over 10 years, the PowerPlex Series utilises new built-in super capacitor technology to store power longer and more efficiently. Once the first digit of a valid code is entered to "wake up" the lock, the remainder of the code can be entered and access is granted.

The built-in super capacitors will hold a full charge for up to 14 weeks with no activity at the lock. The new and improved functionality of the stand-alone PowerPlex not only simplifies its operation, but greatly enhances its performance.

# AuditGard Series



## Multiple Entry Options

- Recommended: 5750-k Round Entry, Audit & eKey II; 3125 Round Entry, Audit & eKey
- Optional: 3190 PRIVAT II Entry, Audit & eKey II; 8130 Integrated Time Delay Display

## Certifications

- UL Listing, Type 1, VdS Listing, Class 2

## Options & Accessories

- 43087 Audit Cable with Serial Interface (5750-k/3190 Keypads); 42160 Audit Cable with Serial Interface (3125 Keypad); 2714A AC power supply with Battery Backup; 6066 Reset Box; 3122 eKey (3125 Entry); 40169 eKey II (5750-k/3190 Entries); 2788/2789 Small Battery/Alarm Box; 4001/4002 Large Battery/Alarm Box

**The AuditGard Series offers multiple user functions as well as audit functions. Customer specific versions can be created by adding functions via the La Gard PC programming software.**

The eKey function permits the opening of the locks by the code and the eKey. Different inputs units - all in metal design - are available with a soft keypad or a foil keypad. The spy proof version "3190" can also be used with the AuditGard series.

According to the safe application, a deadbolt or a swingbolt locking system can be chosen. The patented swingbolt technology offers a spindleless system which moves the bolt by the operation of the bolt work.

## Specifications

- Master, One Manager and Eight Users
- Audit Trail
- LG View Software, 512 events with date and time stamp
- Time Delay
- Entering a valid combination will begin the delay period. The lock can not be opened until the delay period ends.
  - Delay Period: 1-99 minutes
  - Open Period: 1-19 minutes
- Time Delay Override Mode
  - Enables user 9 to override the delay period
- Dual Code
  - Requires the use of two valid combinations to open the lock
- Dual Token
  - Use of either the eKey or eKey II along with the user code for identification purposes

## Variety of Lock Types

- Silent Alarm: Alarm box 2789 or 4002 required. Duress signal is sent to alarm box if the last number of the combination is entered either using one number higher or lower. Lock will open without indication that duress signal has been sent to the alarm systems
- Remote Override Signal/ Signal to Disable Lock: Alarm box 2789 or 4002 required. Input signal to the Alarm Box will disable opening of the lock by a valid combination or disable all lock functions
- Wrong Try Penalty: Four consecutive invalid codes initiates five minute delay period
- Low Battery Signal
- Lock Types Available: 4300M Swing Bolt Lock, 6040M Dead Bolt Lock, 4-Wheel Lock

# ComboGard Pro Series



## Variety of Lock Types

- Silent Alarm: Alarm box 2789 or 4002 required. Duress signal is sent to alarm box if the last number of the combination is entered either one number higher or lower. Lock will then open without indication that duress signal has been sent to the alarm system
- Lock Disable: Alarm box 2789 or 4002 required. Input signal to the Alarm Box will disable opening of the lock by a valid combination
- Audits: 63 Audit Events via LG View Software

## Multiple Entry Options

- Lock types available: 4300M002U Swing Bolt Lock; 6040M002U Dead Bolt Lock; 6441U2U Redundant Mechanical, 4-Wheel Lock
- Recommended: 5750-K Round Entry; 3125 Round Entry
- Optional: 3190 Privat II; 8130 Integrated Time Delay Display

## Certifications

- UL Listing, Type 1, VdS Listing, Class 2

## Options & Accessories

- 701104 Software Implementation Kit
- 2788 Small Battery/ Alarm Box
- 4001 Large Battery/ Alarm Box

**The ComboGard Pro is a further development of the ComboGard series. The electronic safe lock allows for lock programming at either the keypad or via the PC programming software.**

Different input units - all in metal design - are available with a soft keypad or a foil keypad.

According to the safe applications, a deadbolt or a swingbolt locking system can be chosen. The patented swingbolt technology offers a spindleless system which moves the bolt by the operation of the bolt work.

## Specifications

### Product Features

- Low Battery Signal
- Wrong Try Penalty

### Programmable Features

- Manager Mode
  - Allows the Manager to Add/Delete or Enable/ Disable 9 additional Users
- Dual Mode
  - Requires the use of two valid combinations to open the lock
- Time Delay
  - Entering a valid combination will begin the delay periods. The lock can not be opened until the delay periods ends
  - Delay Period: 1-99 minutes
  - Open Period: 1-19 minutes
- Time Delay Override Mode
  - Enable Users 9 to override the delay period.

# Basic La Gard Series



**Variety of Lock Types**

- 4200M Swing Bolt
- 3740M Dead Bolt

**Multiple Entry Options**

- Recommended: 3710, 5715, 5750
- Optional: 3000, 3035 (Battery Box Required), 3190

**The Basic Series offers standard functionality and reliability.**

Different Entry Devices - available in metal design - are available with a soft keypad or a foil keypad. The spy proof version "3190" can also be used with the Basic Series.

According to the safe application, a deadbolt or a swingbolt locking system can be chosen. The patented swingbolt technology offers a spindleless system which moves the bolt by the operation of the bolt work.

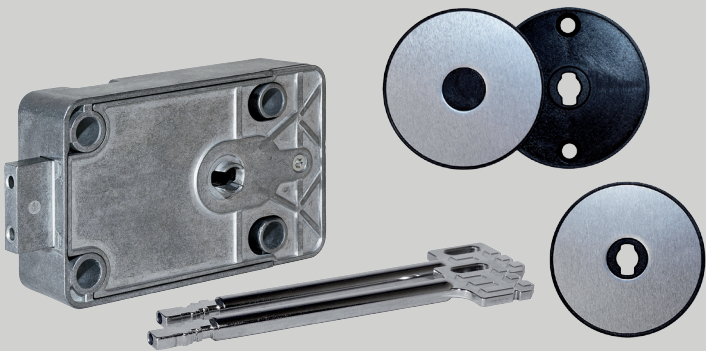
**Specifications**

- Mode:
  - Allows the Manager to Add/Delete or Enable/Disable an additional User
  - Wrong Try Penalty
  - Low Battery Signal
- Super Master code
- 2 users

Approvals/ Certificates					
4200M Swingbolt Lock	5715 Input Unit	5750 Input Unit	3000 Input Unit	3190 Input Unit	3035 Input Unit
EN1300 VdS ECB-S UL	B Class 2 Type 1	B Class 2 Listed Type 1	A Class 1 Listed Type 1	B Class 2 Listed Type 1	B Class 2 Type 1
3740M Deadbolt Lock	3710 Input Unit	5750 Input Unit	3000 Input Unit	3190 Input Unit	3035 Input Unit
EN1300 VdS ECB-S UL	B* Class 2* Type 1*	B Class 2 Listed Type 1	A* Class 1* Listed* Type 1*	B Class 2 Listed Type 1	B Class 2 Type 1

\* 2666 knob required

# Varos



**Features**

- Changeable lock
- 9 levers
- Key retained when in open position
- Bolt with 2 M4 threads, throw 8.7 mm

**Options**

- Left-hand lock

**Accessories**

- Escutcheon
- Escutcheon plate
- Microswitch for bolt monitoring, retrofit
- Screw set for lock mounting, metrical M6 or BSW 1/4
- Leather pouch for detachable bit part

**Approvals/Certificates**

- EN1300 B, ECB-S, VdS-cl. 2, UL437, optional: DNV

**VAROS, the new key lock featuring innovative “mini bit” double-bitted technology. The new patented lock mechanism allows for easy and unique method to change to a new set of keys, without requiring additional tools.**

Moreover, the new “mini bit” key geometry facilitates easy mounting in safes that have previously been prepared for mechanical or electronic combination locks. So no additional drilling is required.

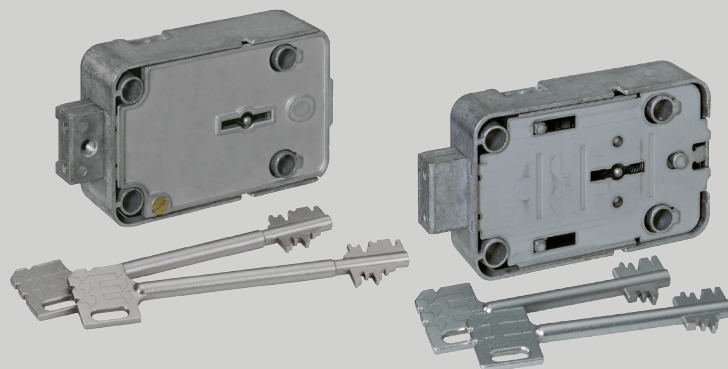
**VAROS, changeable lock with new and proven functionality benefits**

- User-friendly and very robust
- Changeable from the front without using tools
- Keys can remain secret until they are used by the end user
- Standard foot print
- Compatible with mechanical and electronic locks
- Microswitch for bolt monitoring retrofit
- Made in Germany

Key material	Length	Key bow
User key, nickel-plated		
Die-cast	90 / 120 / 150 / 164 mm	Mauer
High-strength brass	120 / 80 - 360 mm	Mauer / Oval, Mauer upon request
Steel, with detachable mechanism	120 - 350 mm	Oval, Mauer upon request
Works key, nickel-plated		
High-strength brass	120 / 80 - 360 mm	Mauer / Oval, Mauer upon request



# Variator A and B



## Variator B - Keys with Mauer bow

### Lock

- Changeable locking works
  - 11 levers, electrolytic galvanised steel
  - Key not removable when the lock is opened
  - Die-cast lock casing and bolt
  - Bolt with 2 M4 threads
  - Prepared for bolt extension to the front
  - Weight approx. 530g
- Admissible mounting positions. Right hand lock, opening clockwise



### Approvals / Certificates

- EN1300 B / VdS Class 2

## Variator A - Keys with Mauer bow

### Lock

- Changeable lock
  - 8 levers, electrolytic galvanised steel
  - Key not removable when the lock is opened
  - Die-cast lock casing and bolt
  - Weight approx. 460g
- Admissible mounting positions. Right hand lock, opening clockwise



### Approvals / Certificates

- EN1300 A / VdS Class 1

## Variator B - 70076, the changeable keylock with 11 levers

User double bitted keys available 120, 150, 164 mm lengths, in nickel plated diecast.

### Specifications

- Changeable lock with dead bolt for safes CEN III-V
- Approx. 60 million theoretical variations
- Standard footprint
- User-friendly change from the front utilising a change activator. i.e. without having to dismantle the door
- Change can also be initiated via a slide unit at the back of the lock
- The lock can be supplied in works or user locking mode

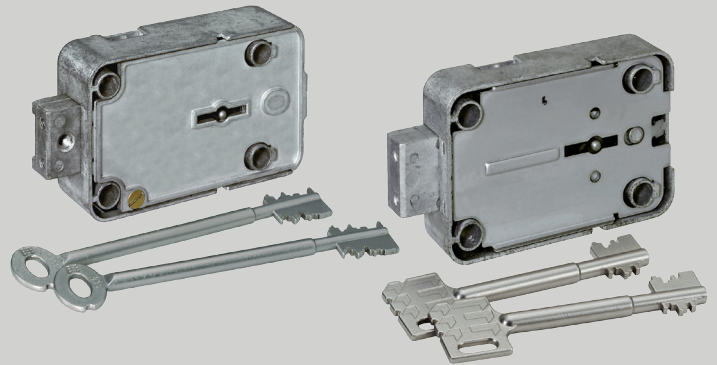
## Variator A - 70091, the changeable keylock with 8 levers

User double bitted keys available 90, 120, 150, 164 mm lengths, in nickel plated diecast.

### Specifications

- Changeable lock with dead bolt for safes CEN 0-II
- Approx. 280,000 theoretical variations
- Standard footprint
- User friendly change from the front utilising a change activator. i.e. without having to dismantle the door
- Change can also be initiated via a slide unit at the back of the lock
- The lock can be supplied in works or user locking mode.

# Praetor & President



## Praetor

### Lock

- 11 levers, electrolytic galvanised steel
  - Key not removable when the lock is opened
  - Die-cast lock casing and bolt
  - Bolt with 2 M4 threads
  - Prepared for bolt extension to the front
  - Weight approx. 530 g
- Admissible mounting positions. Right hand lock, opening clockwise



## Approvals /Certificates

- EN1300 B / VdS Class 2

## President

### Lock

- 8 levers, electrolytic galvanised steel
  - Key not removable when the lock is opened
  - Die-cast lock casing and bolt
  - Weight approx. 340g
- Admissible mounting position. Right hand lock, opening clockwise



## Approvals /Certificates

- EN1300 A / VdS Class 1

## Praetor 70079, the mechanical keylock with 11 levers

User double bitted keys are available in 120, 150, 164mm lengths, in nickel plated diecast.

### Specifications

- Standard footprint
- Approx. 60 million theoretical variations
- Lock with dead bolt for safes CEN III-V
- Key carrier Servant K provides a further key variation on the standard keys

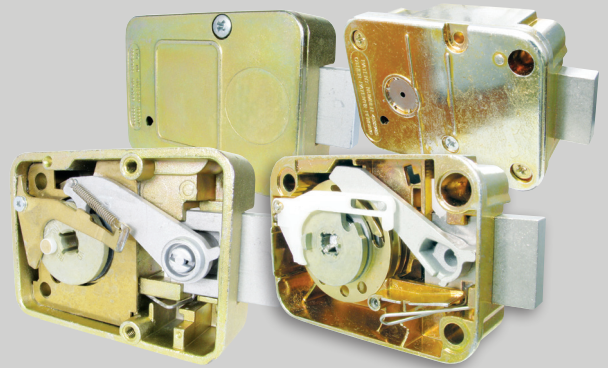
## President 71111 is the mechanical keylock with 8 levers

The high sales rate reflects this lock's success world-wide. User double bitted keys are available in 65, 90, 120, 150, 164 mm lengths, in nickel plated diecast.

### Specifications

- Approx. 280,000 theoretical variations
- Lock with dead bolt for safes CEN 0-II
- Standard footprint

# La Gard Mechanical Combination Locks



## Dials

Models 1730 - Restrict-A-Vision Dial and Ring and 1731 - Restrict-A-Vision Key Locking Dial and Ring

- For use with all La Gard Mechanical Combination Locks
- Top reading
- Satin chrome finish and black numbers
- Die-cast spindle - 4" (102 mm)

Options:

- Steel spindle - 7.50" (191 mm)
- Steel spindle - 11.5" (292 mm)



Models 1777 - Dial and Ring, 1779 - Key Locking Dial and Ring

- For use with all La Gard Mechanical Combination Locks
- Front reading
- Satin chrome finish and black numbers

Options:

- Die-cast spindle - 4" (102 mm)
- Steel spindle - 11.5" (292 mm)
- Black finish with white numbers



## Model 1985 - 3 Wheel Combination Lock, UL Group 1, EN1300B, VdS Class 2

### Specifications

- Die-cast bolt and drop lever
- Standard footprint
- One million possible combinations
- Integrated re-locker, bolt blocking in case of manipulation of the lock cover
- Bolts available in standard 0.5" (12.7 mm) and extended 1.50" (38.1 mm) lengths
- Drilled and tapped bolts available US (10-32) and Metric (4 mm)
- Mounting RH, LH, VU or VD

## Model 3390 - 3 Wheel Combination Lock, UL Group 2M, EN1300B, VdS Class 2

### Specifications

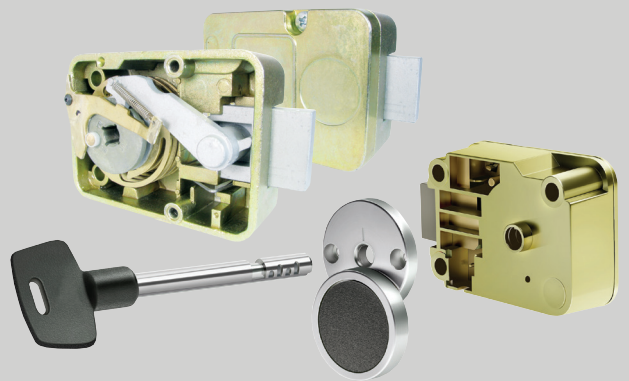
- Thru-case mounting
- Sintered steel bolt and die-cast drop lever
- Standard footprint
- One million possible combinations
- Integrated re-locker, bolt blocking in case of manipulation
- Bolts available in standard 0.5" (12.7 mm) and extended 1.50" (38.1 mm) lengths
- Drilled and tapped bolts available US (10-32) and Metric (4 mm)
- Mounting RH, LH, VU or VD

### Accessories

- 2300 - Satin Chrome Handle with Stem (2.5" x 7/16-20)
- 2300-1 - Satin Chrome Handle with Stem (2.0" x 5/16-40)
- 2301 - Satin Chrome Handle without Stem



# La Gard Mechanical Combination Locks



## Dials

Models 2085 - VisionGard, Dial and Ring and 2090 - VisionGard, Key Locking Dial and Ring

- For use with all La Gard mechanical combination locks
- Top reading
- Satin chrome with black numbers
- Die-cast spindle - 4" (102 mm)

Options:

- Steel spindle - 7.50" (191 mm)
- Steel spindle - 11.5" (292 mm)
- Brass finish with black numbers



Model 2107 - Small Dial and Ring

- For use with all La Gard mechanical combination locks
- Front reading
- Die-cast with satin chrome or black & white finish
- Die-cast spindle - 4" (102 mm)

Options:

- Steel spindle - 7.50" (191 mm)
- Steel spindle - 11.5" (292 mm)
- Black finish with white numbers



## Model 1947 - 4 Wheel Combination Lock, UL Group 1, EN1300C, VdS Class 3

### Specifications

- Die-cast bolt and drop lever
- Standard footprint
- One hundred million possible combinations
- Integrated re-locker, bolt blocking in case of manipulation
- Bolts available in standard 0.5" (12.7 mm) and extended 1.50" (38.1 mm) lengths
- Drilled and tapped bolts available US (10-32) and Metric (4 mm)
- Mounting RH, LH, VU or VD

## Model 2270 - 4 Wheel Keyed Combination Lock, UL Type 2

### Specifications

- Four brass wheels for long life
- Standard footprint
- Key retained when in open position
- Integrated re-locker, bolt blocking in case of manipulation
- Bolts available in standard 0.5" (12.7 mm) and extended 1.50" (38.1 mm) lengths
- Drilled and tapped bolts available US (10-32) and Metric (4 mm)

### Accessories

- 1776 - Large Dial Pull Handle (dial not included)
- 1762 - Dial, Satin Chrome, Key Locking
- 1763 - Dial, Satin Chrome
- 2109 - Small Dial Pull Handle- Black (dial not included)
- 2106 - Small Dial - Satin Chrome
- 2106B - Small Dial - Black

