



BEYOND SECURITY

KABA[®]

Lodging Access Control Solutions



Enhance the guest experience and increase operational efficiency.

Delivering innovation, reliability and convenience makes Kaba the most trusted name in the lodging industry.

The Kaba Ilco and Saflok product brands offer a complete selection of guest room locking and access management solutions for limited service properties, as well as deluxe destination resorts. As security requirements for the lodging industry evolve, Kaba continues to deliver innovative access control systems that provide security, reliability, efficiency and convenience to enhance the hotel's lock system investment and the guest experience. Kaba group leads the industry in developing and implementing total-enterprise security for guest room doors, common areas, and physical access in RFID, wireless online systems, smart room and energy management interfaces and now — secure mobile access solutions. All products are designed, assembled and tested in North America. Every lock is BMHA/ANSI Grade 1 certified and is ROHS (Restrictions of Hazardous Substances) and CE/EMC compliant.



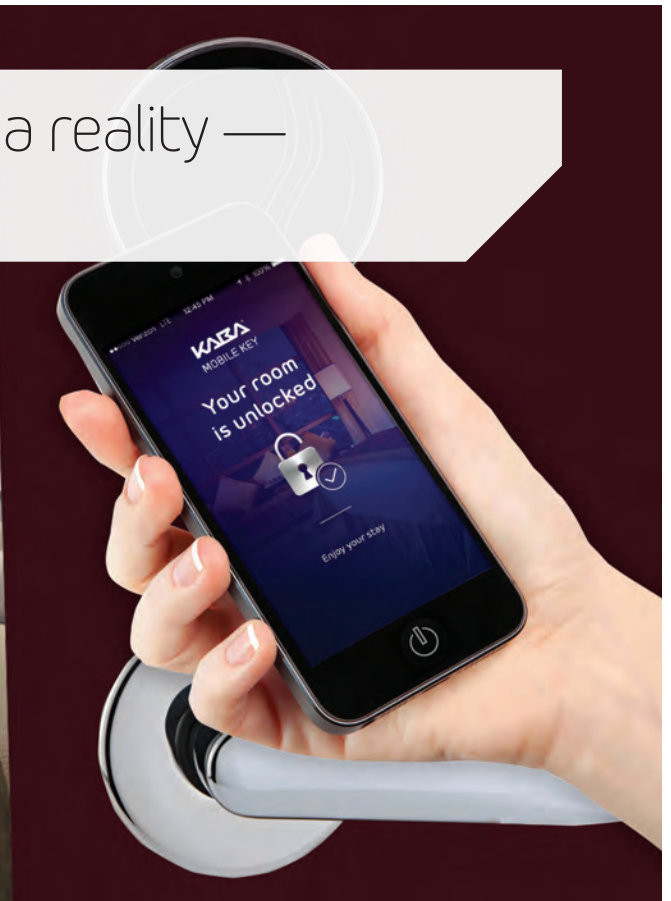
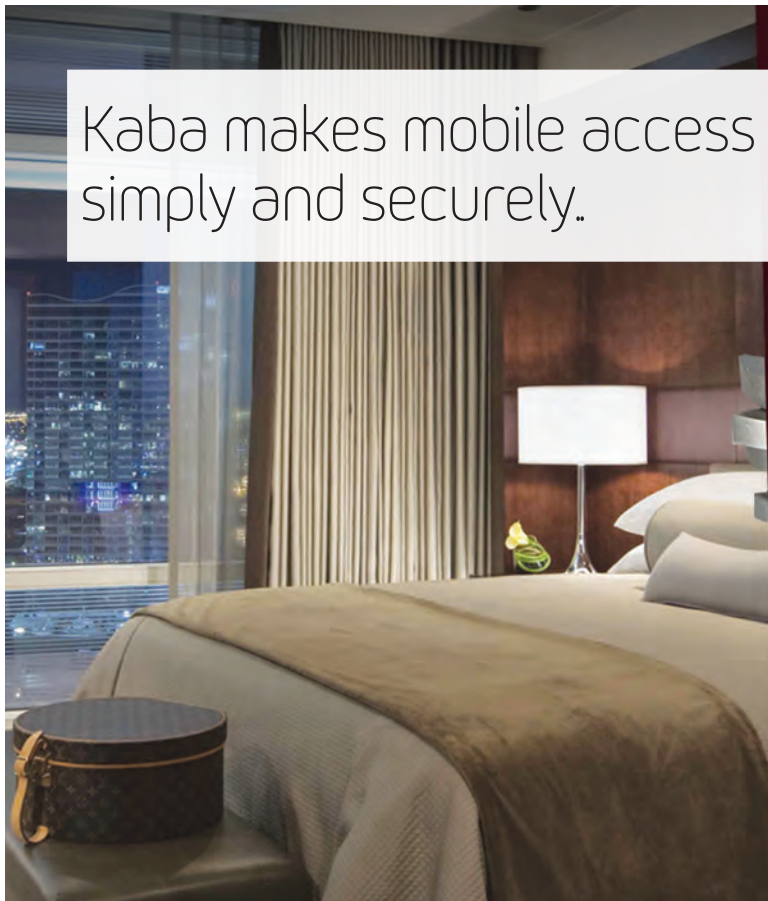
Merge secure mobile access solutions with guest convenience.



Issue and manage guest keys on mobile devices.

The mobile mindset of today's generation demands choice of service, giving guests the opportunity to fully control their travel experience. With Kaba Mobile Access Solutions, hoteliers can meet those demands by turning the mobile device into a service tool, providing a convenient way for guests to fully-control their travel preferences. From secure room access, to taking advantage of hotel accommodations and services, in-stay features available on mobile devices simplify travel and enhance the overall guest experience while driving revenues and adding value to the hotel brand.

Kaba makes mobile access a reality — simply and securely.



Kaba RFID locks ensure a seamless hotel system integration for end-to-end security with compatible mobile devices.

Your overall mobile platform integrated with Kaba technology delivers a more personalized, interactive guest experience.

Convenient, reliable and secure for both the hotel property and guests, Kaba Mobile Access Solutions is an end-to-end mobile credential application utilizing Bluetooth Low Energy (BLE), the preferred communication technology for Kaba mobile-enabled RFID hotel locks. The mobile access solution integrates seamlessly with the hotel locking system providing a cloud-based platform to securely issue and manage keys on mobile devices.

With Kaba Mobile Access Solutions, guests have the ability to bypass the front desk check-in process and proceed directly to their room. What's more, they can move freely about the property using their mobile device to access any common area in the hotel requiring a room key.



Confidant RFID — a natural extension
of guest room ambience.



Reflect true hospitality

The Confidant RFID asserts a softer, more engaging look to reflect true hospitality. Together with graceful lines and clean aesthetics, its RFID contactless technology enhances the guest experience while extending the service life of the lock. This ultra-modern, Bluetooth Low Energy (BLE) capable lock conveniently functions with all Kaba access control systems.

Ease of installation makes Confidant RFID a perfect fit for new applications or replacing existing mechanical or electronic hotel locks to complement modern hotel decor. Its multiplatform functionality offers the convenience of both key card and mobile guest key access.

Electronic hotel locks — improve the guest experience with RFID technology

Outstanding value. Peerless quality.

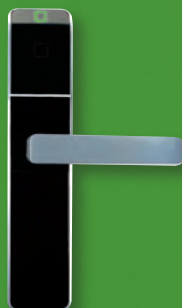
Kaba RFID electronic hotel locks personify an unwavering commitment to deliver innovative solutions designed expressly for the lodging market. All Kaba RFID hotel locks are mobile access compatible allowing guests to access their room using a keycard or mobile device. Smart room automation is another key benefit realized with RFID contactless technology. Hotels seeking to accentuate guest convenience while improving operational efficiency choose Kaba for exceptional features, outstanding value and peerless quality. To meet the diverse and evolving needs of the lodging industry, Kaba RFID locks can be installed as stand-alone or networked with Kaba wireless online and web-based access control systems.

Full-Body RFID

Kaba maintains an unwavering commitment to providing affordable solutions that are durable, reliable, and simple to manage. Kaba full-body, RFID electronic locks are a recommended solution for mechanical or electronic locks in both new and retrofit applications, and are offered with a Bluetooth Low Energy (BLE) option for mobile key operability..



790/RT



Confidant RFID



MT RFID

Room Automation

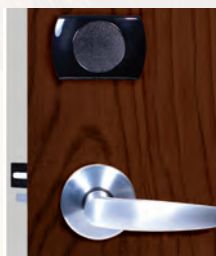
Kaba RFID electronic locks make entering the guestroom a custom experience, tailored to the unique preferences of each guest. Combined with Saflok Messenger LENS wireless online system, the lock communicates with in-room devices via the hotel network to adjust lights, temperature, blinds and TV – all to the guest's liking.

Modular RFID

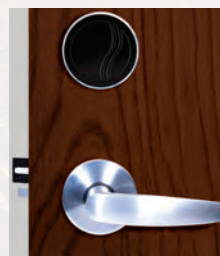
Kaba's unique, two-piece modular RFID solution offers keycard auditing capabilities to monitor staff and report user accountability. The locks are offered with a Bluetooth Low Energy (BLE) option for mobile key operability. The Quantum Series is synonymous with superior performance and is renowned for access control, life safety and security.



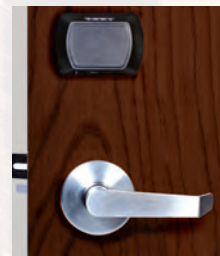
Quantum II



Quantum III



Quantum



Q90



Perimeter & Facility Access Solutions



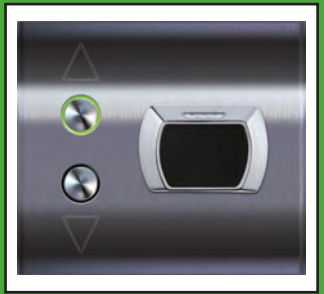
Kaba Electronic Access Control

The reader operates perimeter access hardware such as elevator, parking entrances or doors with an electric strike or electro-magnetic lock. The readers are available flush mount or surface mount and function with Kaba access control systems.



Elevator Control Units

The control unit is a versatile stand-alone card reader controller. Those units operate with perimeter doors secured with electrified hardware including elevator doors, concierge floors and common areas. Available in popular architectural finishes.



Kaba Exit Device Operators

Exit device operators allow access control of exit doors equipped with panic devices and are compatible with rim, mortise, vertical rod and concealed vertical rod exit devices. They offer the same design and security features as the guestroom locks ensuring hotel door hardware design remains uniform.



RT/790



MT RFID



Confidant RFID



MT RFID



E-Plex 2000

Utility Locks

Utility locks are the ideal solution for hotels seeking to secure their back-of-house using one integrated system. In addition, the E-Plex 2000 lock features the strength, simplicity, and reliability of Kaba's industry leading keyless pushbutton locks. PIN access eliminates issuing and managing keys and is ideal for offices, storerooms, and other doors.

Access Control Systems

Saflok Web

Saflok Web is an intuitive and user-friendly web-based access control system that offers the superior key management functionality, centralized auditing and detailed system use reporting.

Hoteliers will experience total control throughout their property, from guest rooms to back-of-the-house access. Saflok Web interfaces with existing PMS and integrates with most third-party applications. The system is customizable and can be used on personal computers, tablets and smart mobile devices.



Saflok Messenger LENS

Wireless Online System

The Saflok Messenger LENS Wireless Online System is ideal for hotels seeking the ultimate in security and convenience while maximizing operational efficiency. The system offers a two-way communication between the front desk and the hotel's electronic locks. Alerts are sent to hotel server while staff is notified by email or text message. The system can also communicate events that occur at the locks to third party devices or systems.



Saflok SecureShift Advanced

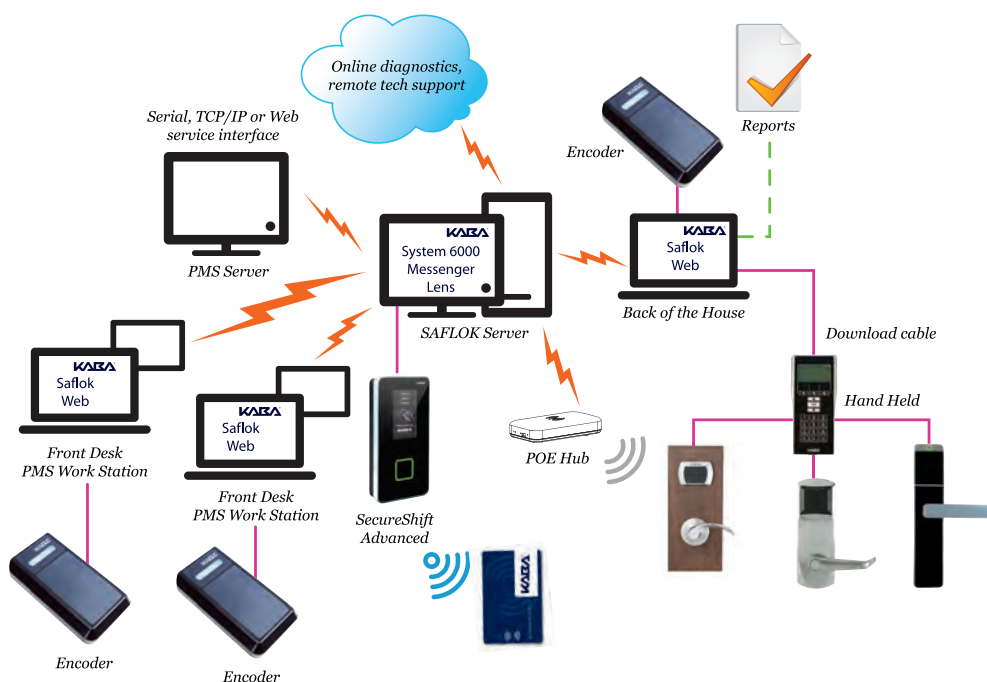
SecureShift Advanced offers a simple approach to managing employee access, time and attendance and facilitates efficient employee key control — without complex procedures. The intuitive user interface allows management to implement online lock features without requiring a lock communication backbone. Messages are passed between the units and the locks via keycards.

Employees are alerted as they clock in and their key automatically deactivates when they clock out.



Ilco Front Desk Unit (FDU)

The Ilco FDU is a stand-alone portable access control device that programs and audits electronic locks while encoding keycards without the need for a separate computer or database. The FDU is ideal for small to mid-size hotels seeking a simple and cost effective solution for managing guest and staff access throughout the property. The FDU easily integrates with existing property management systems.



Rest *easy*

Kaba Hotel Locking Systems Service Plans

Nobody knows your security products better than the company who designed and installed them. Kaba

Our Bronze, Silver and Gold scalable service plans have been designed to help you maintain your electronic locking system on a fixed yearly budget. All our equipment has excellent reliability, however with our service plans, you can extend the life cycle, reduce any downtime and have access to emergency service support. Giving you and your guests *peace of mind and a good night's sleep.*

	GOLD	SILVER	BRONZE	NO CONTRACT
24/7 access to Kaba support hotline	●	●	●	£69*
Privileged access to Kaba support site: support.kaba.co.uk	●	●	●	
24/7 remote software support	●	●	●	
10% discount on web orders through www.shop.kaba.co.uk	●	●	●	
'Return to base' hardware repairs	●	●		
FDU/Encoder advanced replacement	●	●		
Annual Planned Preventative Maintenance visit (survey, fix and report)	●	●		
No call charges for hardware issues including parts	●**			
Call out charges in normal working hours (8am-5pm M-Th, 8am-4pm Fri)	Inclusive**	£400	£550	£750
On-site annual staff refresher training (up to 6 employees)	Inclusive***	£400	£400	£550
On-site software support	£800	£800	£800	£1,000

*Per call during working hours

**Subject to fair usage policy

***One session per annum

For more information or to take out a service plan that suits your needs and gives you peace of mind, please call us on (0)870 000 5625 or email service.uk@kaba.com

Why premier hotels and resorts around the world choose Kaba Lodging access control solutions.

For better than 150 years, Kaba has been committed to developing product solutions for its customers that uniquely combine maximum security and practical functionality. Its growth is driven by innovation and market demand for solutions offering a comprehensive product portfolio relevant to customer requirements in terms of security, sustainability, organizational efficiency and convenience. With more than 9,000 associates worldwide, and 450 registered patents in 60 countries, Kaba continues to set the standard for developing new technologies and innovative solutions to fit the ever-growing needs of our customers – beyond security.



Kaba adds to the luxury at the Langham

The Langham, Chicago's premier guest hotel, chose Kaba's Quantum RFID mobile-ready door locks for all 316 luxury guest rooms and suites. While enhancing the guest experience, the platform was specifically selected for future mobile access capability. Quantum locks link to Kaba's Messenger LENS wireless network, to provide a smooth interface with the property and energy management systems.

The essence of a great hotel experience.

Village Hotels is respected for pushing technology boundaries to bring the ultimate in convenience to its guests. Adhering to its innovative approach, their property in Glasgow, Scotland entrusts Kaba Bluetooth Low Energy RFID electronic locks and mobile access solution for all 120 guestrooms. Kaba was selected based on their global reputation for security and their market-leading mobile technology to meet travelers' emerging demand for greater mobile compatibility.



Kaba stars in the Lone Star State

The Woodlands® Resort & Conference Center, near Houston, was the first resort in Texas to install Kaba's mobile access solutions in all 406 guest rooms. The luxury resort worked with Kaba to create their branded app allowing guests book their room online at the resort's website and download the Woodlands Resort app. Guests can check in and receive their mobile key on their mobile device to access their room and other access points including elevators, concierge areas and external hotel entry doors.



White Lodging gets fit and retrofit with Kaba

White Lodging selected Kaba's Saflok Quantum and RT, RFID, guestroom door locks for more than 30 Marriott, Hilton, Hyatt, IHG, and other flagged properties. The hotel management company chose Kaba lock systems after a thorough evaluation. Kaba was selected on the basis of performance, service, and cost — both for existing and new construction. They replaced their non-PMS-interfaced magstripe locks with the latest fully interfaced RFID locks. They also plan to implement a number of systems that are integrated with the property's guestroom energy management system in order to maximize guest service and energy savings. White Lodging plans to install Kaba RFID locks on all future properties.

